



Product Service

# EC Certificate

## Full Quality Assurance System

Directive 93/42/EEC on Medical Devices (MDD), Annex II excluding (4)  
(Devices in Class IIa, IIb or III)

No. G1 16 09 71617 011

### Manufacturer:

**JOHNSON MEDICAL INTERNATIONAL SDN. BHD.**

NO.12, 16 & 18, JALAN PETALING UTAMA 8  
46000 PETALING JAYA, SELANGOR  
MALAYSIA



### EC-Representative:

**SILKCROWN HEALTHCARE LTD**

10, FIR COTTAGE ROAD  
FINCHAMSTEAD  
BERKSHIRE  
ENGLAND  
RG40 4RJ  
UNITED KINGDOM

### Product Category(ies):

**Ceiling Mounted Pendants,  
Floor Mounted Workstations and  
Wall Mounted Bed Head Panel**

The Certification Body of TÜV SÜD Product Service GmbH declares that the aforementioned manufacturer has implemented a quality assurance system for design, manufacture and final inspection of the respective devices / device categories in accordance with MDD Annex II. This quality assurance system conforms to the requirements of this Directive and is subject to periodical surveillance. For marketing of class III devices an additional Annex II (4) certificate is mandatory. See also notes overleaf.

### Report No.:

MYQMH0216052 -721416188

### Valid from:

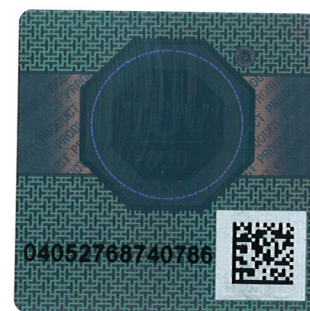
2016-11-18

### Valid until:

2021-06-17

Date, 2016-11-18

Stefan Preiß



TÜV SÜD Product Service GmbH is Notified Body with identification no. 0123

Page 1 of 2



Product Service

**EC Certificate****Full Quality Assurance System**

Directive 93/42/EEC on Medical Devices (MDD), Annex II excluding (4)  
(Devices in Class IIa, IIb or III)

**No. G1 16 09 71617 011****Facility(ies):**

JOHNSON MEDICAL INTERNATIONAL SDN. BHD.  
NO.12, 16 & 18, JALAN PETALING UTAMA 8, 46000 PETALING  
JAYA, SELANGOR, MALAYSIA